

SINGAPORE \$8 MALAYSIA RM18 HONGKONG HKD90 AUSTRALIA AU\$14 OTHERS US\$10

ada

design and architecture

REALITIES:UNITED
PAOLO MENDES DA ROCHA
MELLON TOWN NOW CLUB BY 1+ PARTNERSHIP
IFC OFFICE BY VETARCHITECTURE
JAMES HOTEL CHICAGO BY DBPA NYC
SIN SIN ARTELIER & FINE ART

ISSN 0219-5143



9 770219 514001 >

ISSUE 032. 2006 | S\$8

play dynamics!

BY TROY | PHOTOGRAPHY BY VIRGINIA LUNG

卡拉OK+音樂室



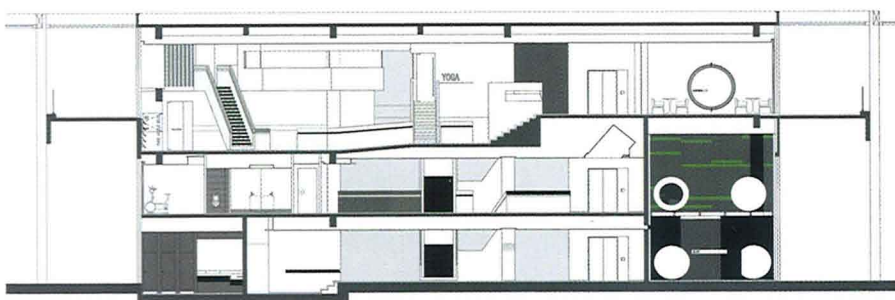
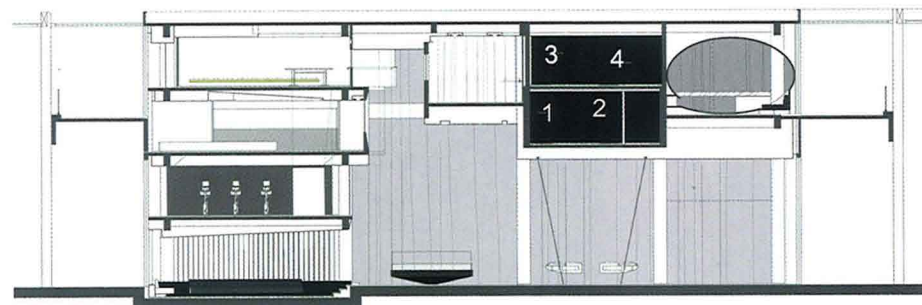
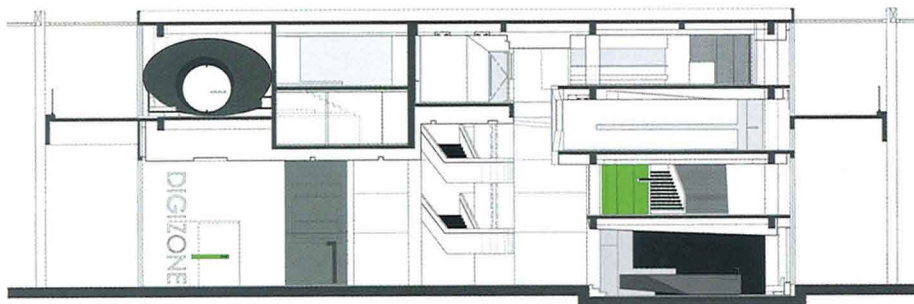
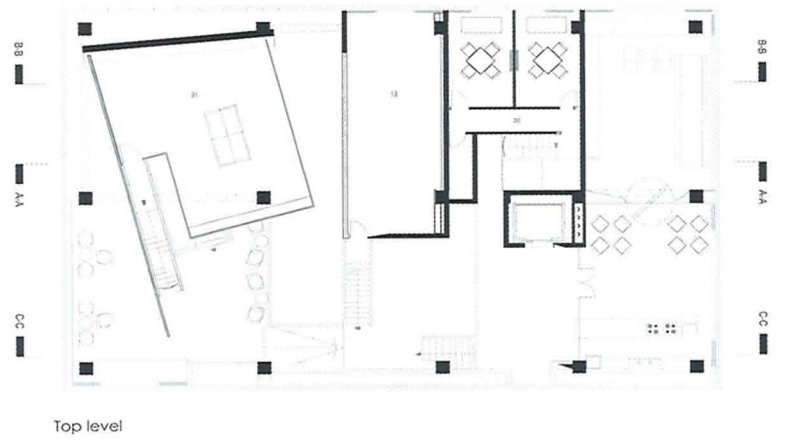
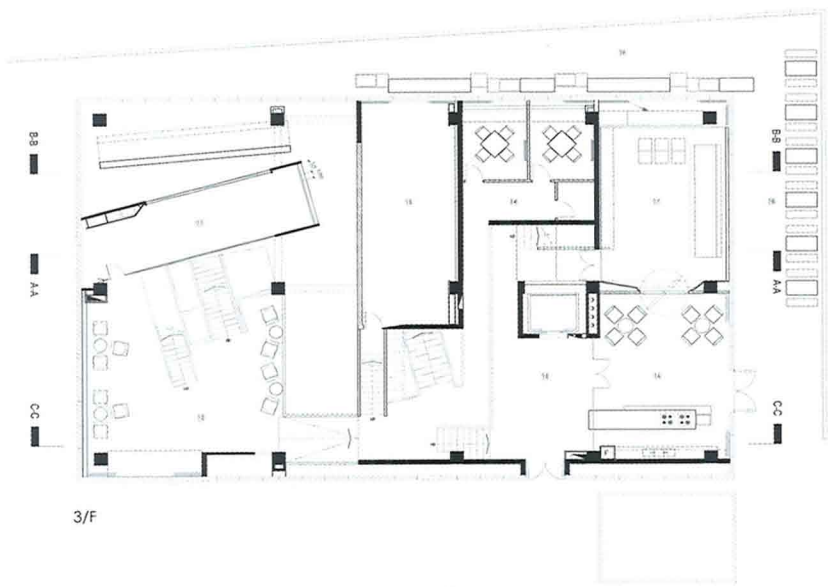
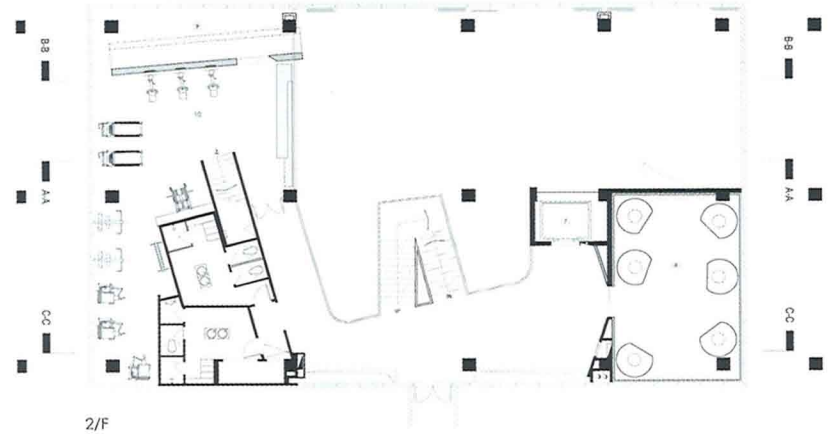
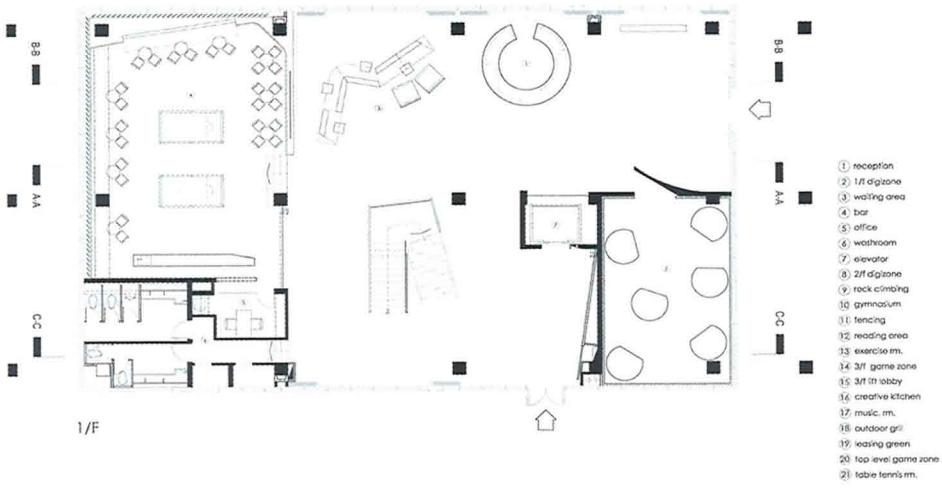


Mellon Town is a residential development aimed at an upcoming prospective generation of 'Right Here Right Now' young buyers born in the '80s. 'This group of people might have just started working for a couple years. They are energetic, they welcome new ideas, although not well off...' (One Plus Partnership design statement) In serving the residents as identified by the brief, the Mellon Town Now Club is designed with this given profile in mind.

a 3D map Starting from a bare shell of a 12-meter high box, the designers carved out volumes within, creating differently shaped floor plates on the different levels that allow visual interaction between floors. It is virtually a 'three-dimensional map', because visitors will not need a floor guide for the clubhouse – it is in itself, architecturally, already a three dimensional map!

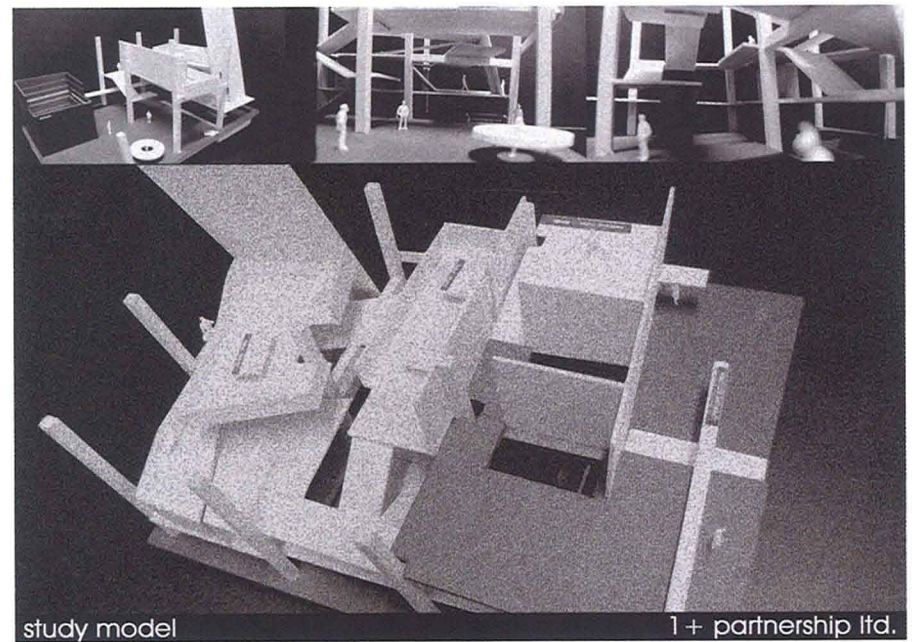
Right at the point when visitors arrive here, they can see where all the activities are in the club, as intended in One Plus Partnership's design. Through the slots, floor opening and partial transparent flooring, all the areas are visible and inviting.

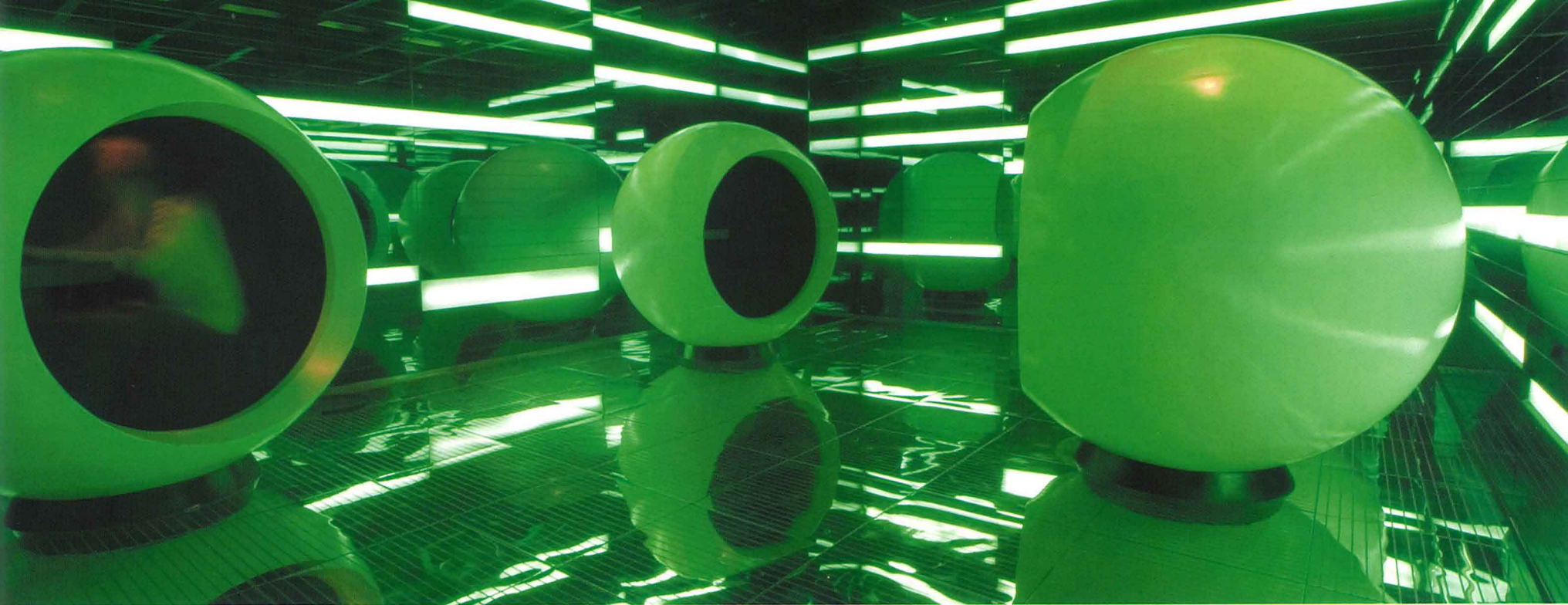
An immediate feature of the interior spaces is in the dynamic interlacing of the floors – the long rectangular fencing room on the third level 'flies' above over the gymnasium on the second level, forming its ceiling, and projects out slightly over the first floor lobby area, looking down through a full-height glass-wall, and capturing instant attention from every visitor the moment they step into the clubhouse.



MELLON TOWN NOW CLUB, SHENZHEN, CHINA

DESIGN ONE PLUS PARTNERSHIP LIMITED
(LAW LING KIT, VIRGINIA LUNG) HONGKONG
CLIENT GEMDALE CORPORATION
TOTAL AREA 2000M²

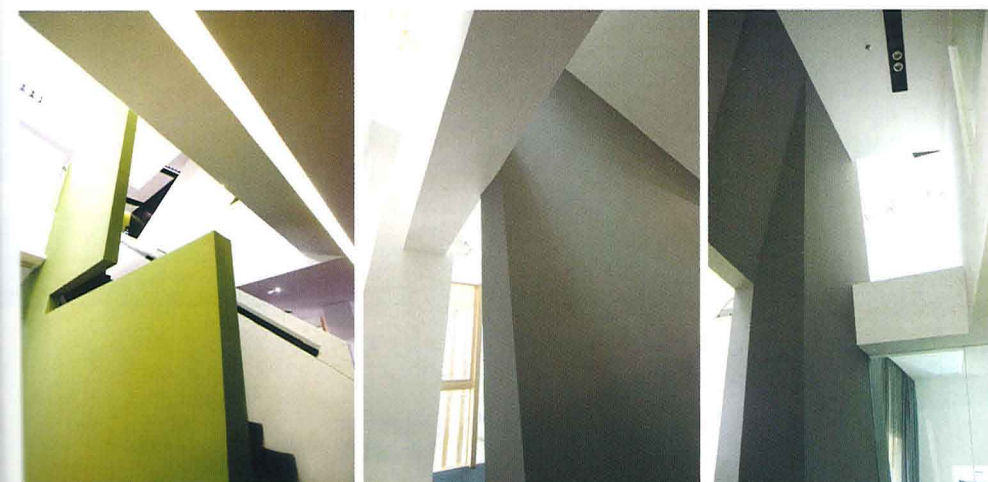
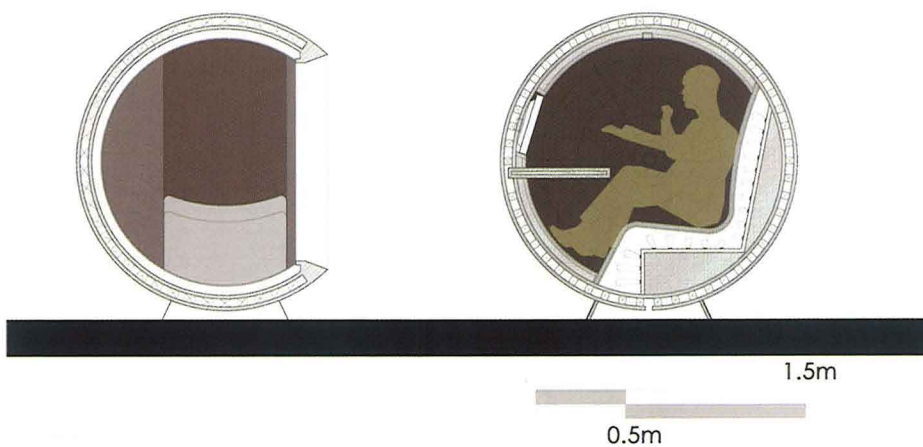




Within the gymnasium, along its leaning far-end through an angled opening, is a dramatic rock climbing wall of height 9.1 meters.

What makes this clubhouse a really fun place to be in is its continuous sequence of surprises, the constant interplay of enclosed and enclosure. In another instance, a quick turn from the reading room on the third level is a short staircase that leads to the table tennis room above.

Even the main staircase is not a standard one – the two landings do not fall on the same vertical grid. And, the top cap of the railing ‘flies’ away above the exhibition area and loops back to morph into an LED strip on the first floor.





The Digizone area for internet gaming is definitely another point of interest. Its transparent glass floor, mirror walls and ceiling, and green-light washed interior, effectively create an illusion of a cyber-room, populated with globular cells within which are the internet stations.

By splitting and interlacing the floor plates, the designers not only had 'fun' with the spaces but also 'maximized its 12-meter volume, and furthermore, gained ceiling heights for the changing room and restroom, and built a double-height gymnasium.'

'For the bar on the ground level, we proposed our client to dig into the ground for more headroom.' In here are feature mirror-finished louvers along the perimeter of the bar. At sundown, light from the setting sun washes over the hundred pieces of glittering louvers, casting long shadows over the bar area and on the user. Oversized sofas, and the skewered bar-counter with one side slightly off the floor, form the gathering point of the club.

'The club is about activity and the space should be dynamic,' emphasised the designers. Even the reception counter has its take on this statement – its light circular, floating, form is to 'suggests connection to all directions.' Connections that are not only visual but also physical: 'The green, tilted, sun-shade panel starts from the table tennis room, wraps around the reading area, and stretches through the glass wall of the creative kitchen and terminates as an oblique hood above the cooking counter.'

Intriguingly, a vault-like circular door connects as well as separates the creative kitchen and the karaoke room. Behind this pivoted door is the black-leather panelled karaoke room in a tunnel-like space where escapism is enjoyed in yet another one of its many forms. ✚

