

0 国际室内设计年鉴 2009

INTERNATIONAL INTERIOR DESIGN 2009

张先慧
主编

售楼中心
SALES CENTRES

样板房
SHOW FLAT

大连理工大学出版社

金地格林小城 JINDI GREEN TOWN

项目资料:

设计单位: 香港壹正企划有限公司
 设计: 罗灵杰 龙慧祺
 摄影: 龙慧祺
 位置: 武汉
 面积: 150 平方米
 主要建材: 黑麻, 锈钢, 黑/白色烤漆, 黑/白色地毯

Project Information:

Design Unit: Hong Kong One Plus Partnership Limited
 Designer: Luo Lingjie Long Huiqi
 Photographer: Long Huiqi
 Location: Wuhan
 Area: 150 m²
 Materials: Black Hemp, Rusty Steel, Black/White Paint, Black/White Vinyl



项目说明:

古典的欧式设计着重平衡和协调, 颜色丰富而且轴线明显。我们希望做一个反传统的古典式设计, 里面没有平衡的轴线而且在颜色运用方面亦只是用黑白色。

古典的设计一向是有规有矩, 但是我们把常用的墙饰对比改变了, 加入了强烈的现代元素, 使整个样板间都是强烈的黑白对比。黑白两色往往不受中国人欢迎, 因为人们觉得它们太冷, 不够喜庆。要说服开发商又是一项艰难的事情, 但最终的效果却带给他们欣喜。最初他们怕效果会是单调、冷清的和没有价值感, 但最终这些顾虑通通被打消, 因为颜色和形态的强烈反差已经赋予空间出彩的效果。

Project Description:

We followed a style of simplified color arrangement of black and white which was contrast with classical European decoration of abundant colors and axis lines.

We modified the shape of ordinary wall surface decoration and added contemporary elements to form a strong visual contrast between black and white, instead of cool atmosphere worried by real estate developer. We successfully arranged a comfortable residential show flat with these 2 colors.









长江实业新加坡景颐峰

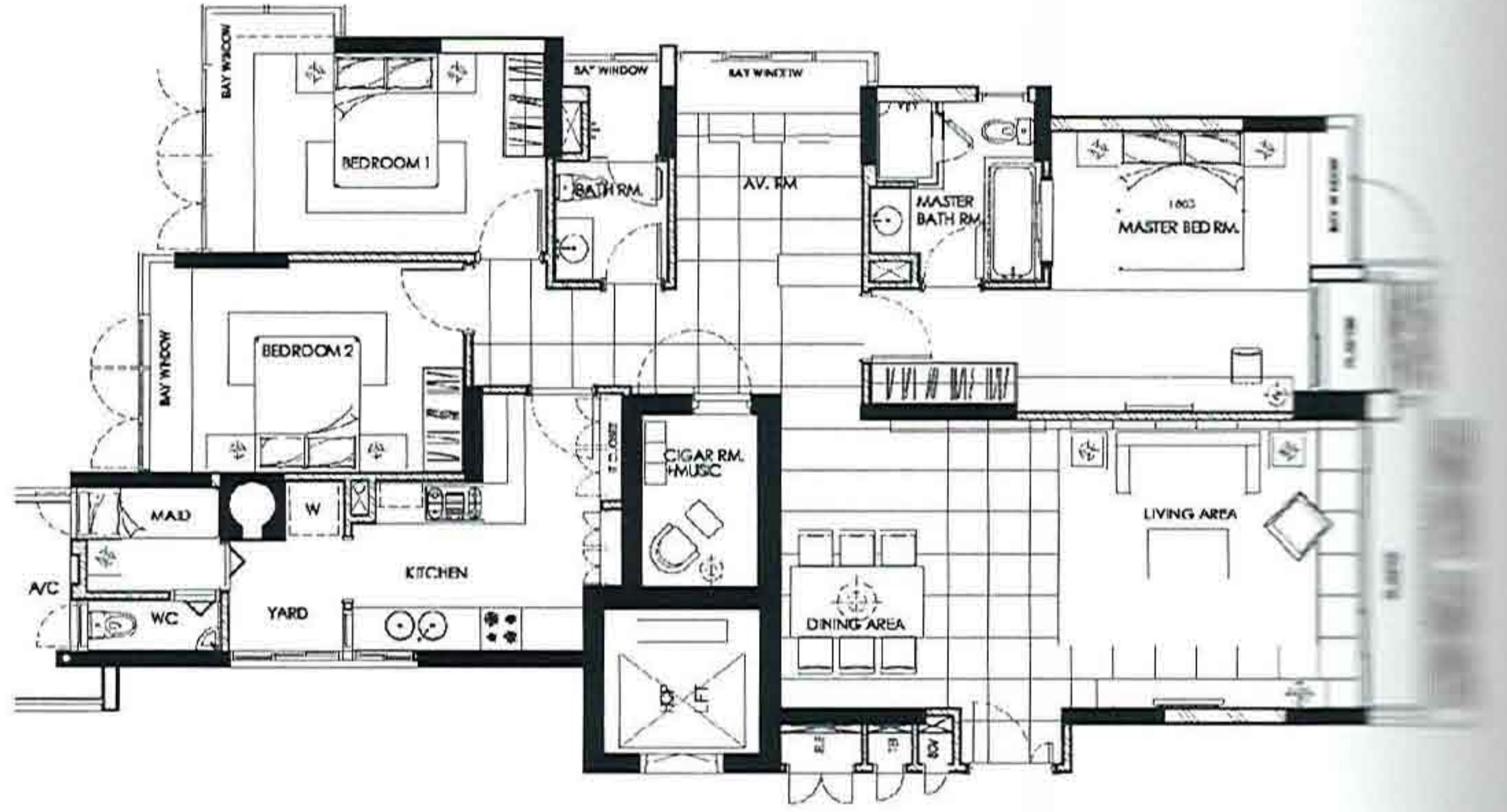
CHEUNG KONG SINGAPORE
CAIRNHILL CREST

项目资料:

设计单位: 香港壹正企划有限公司
设计: 罗灵杰 龙慧祺
摄影: 龙慧祺
客户: 长江实业
位置: 新加坡乌节路
主要建材: 大理石地台、黑檀木、混凝土墙、白色钢琴漆

Project Information:

Design Unit: Hong Kong One Plus Partnership Limited
Designer: Luo Lingjie Long Huiqi
Photographer: Long Huiqi
Client: Cheung Kong
Location: Wujie Road, Singapore
Materials: Marble Floors, Black Macassar Ebony, Concrete Walls, Brown and White Piano Lacquer



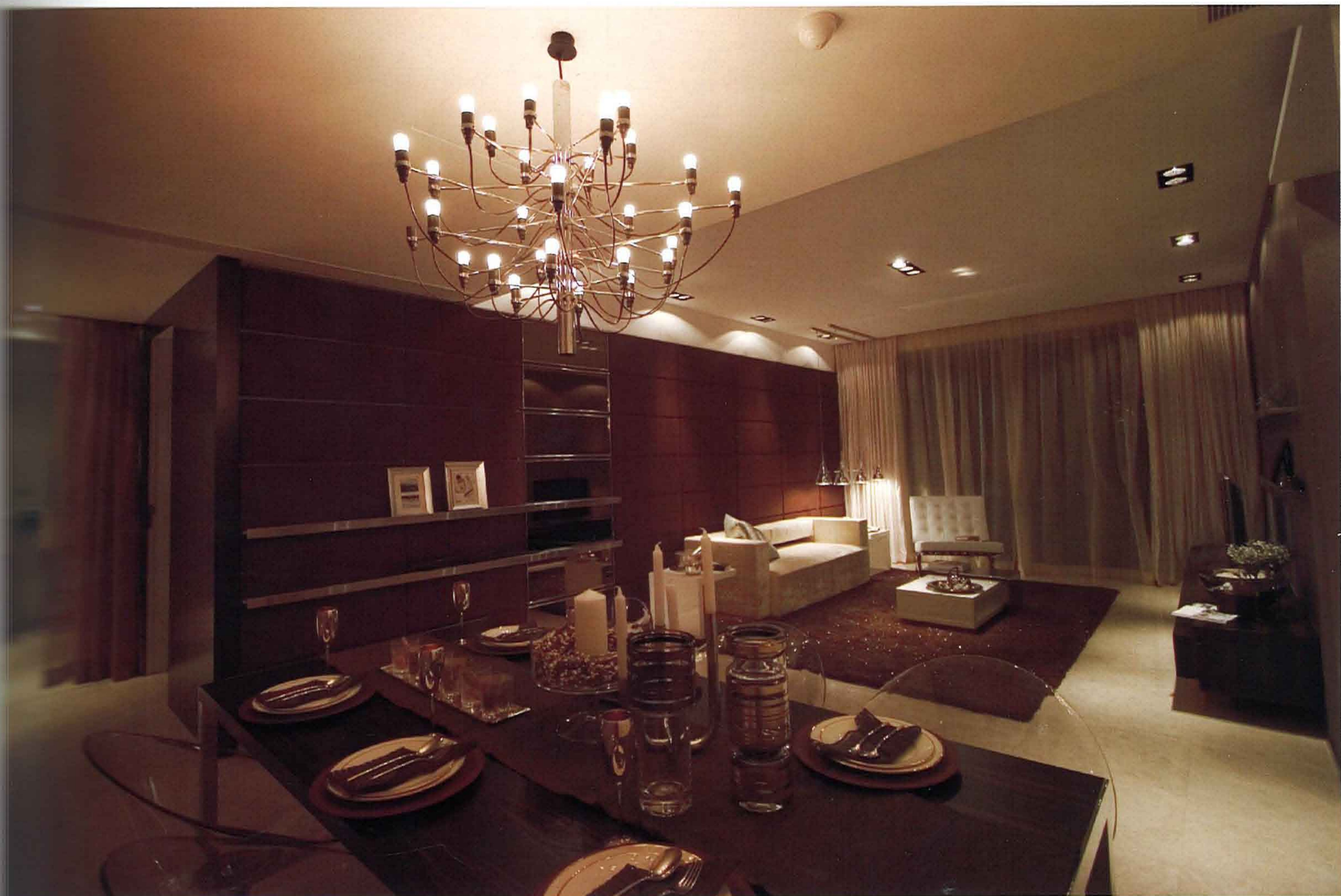
项目说明:

这楼盘坐落在新加坡位置最好的乌节路上, 享有比六星级酒店更好的景观。颜色都用了暖和的色调。客厅和主人房都用了深咖啡色的墙布, 与纯白的家具形成对比。进口的欧洲家具和灯饰更是点缀了整个空间。

Project Description:

Considering the excellent location of this project and outstanding landscape surrounding, we use warm basic color tone and dark coffee colored cloth wall surface treatments to form a strong contrast with the purified white furniture. Imported furniture and European stylish lights also help to decorate the space.





东莞金地格林小城销售处

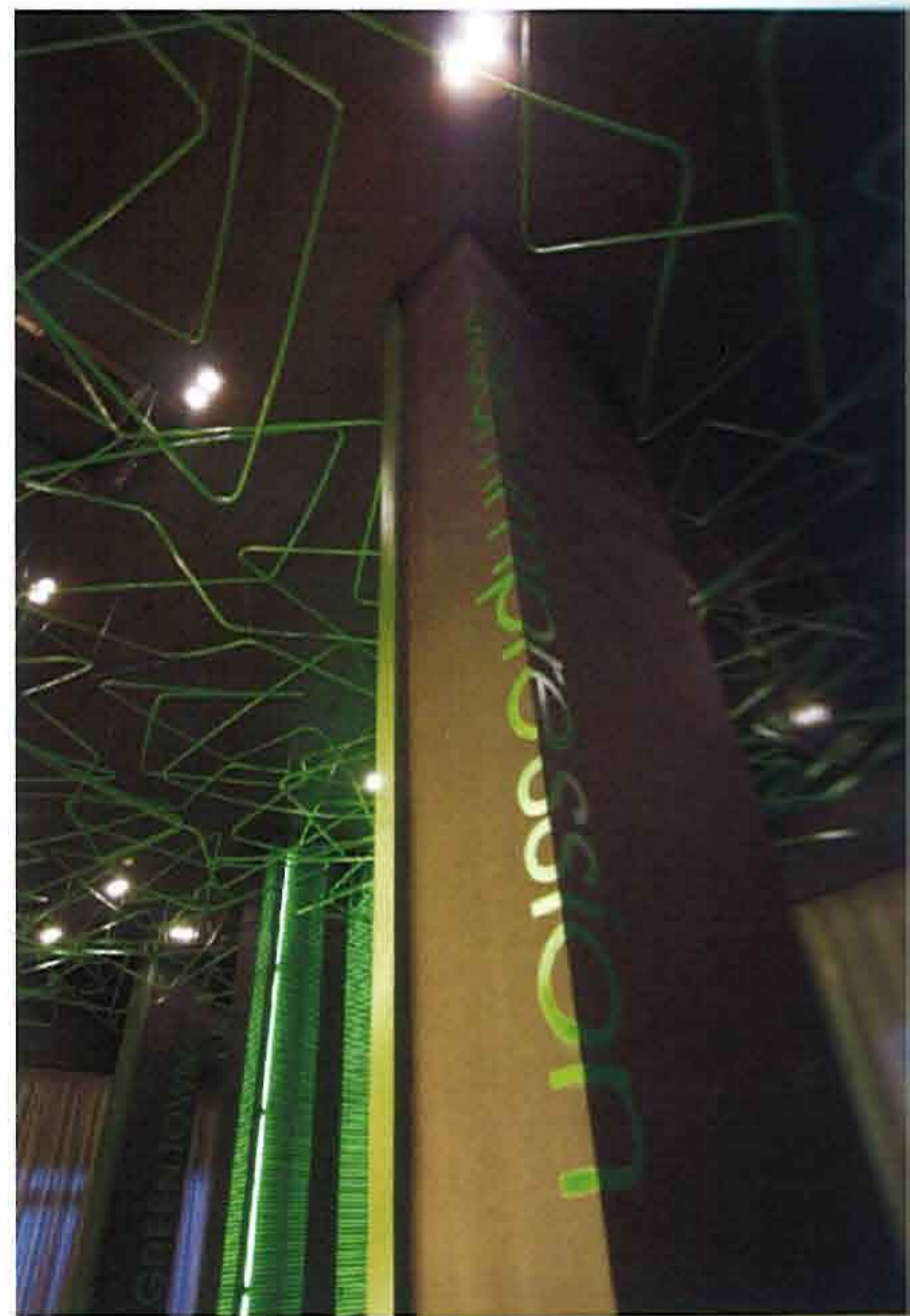
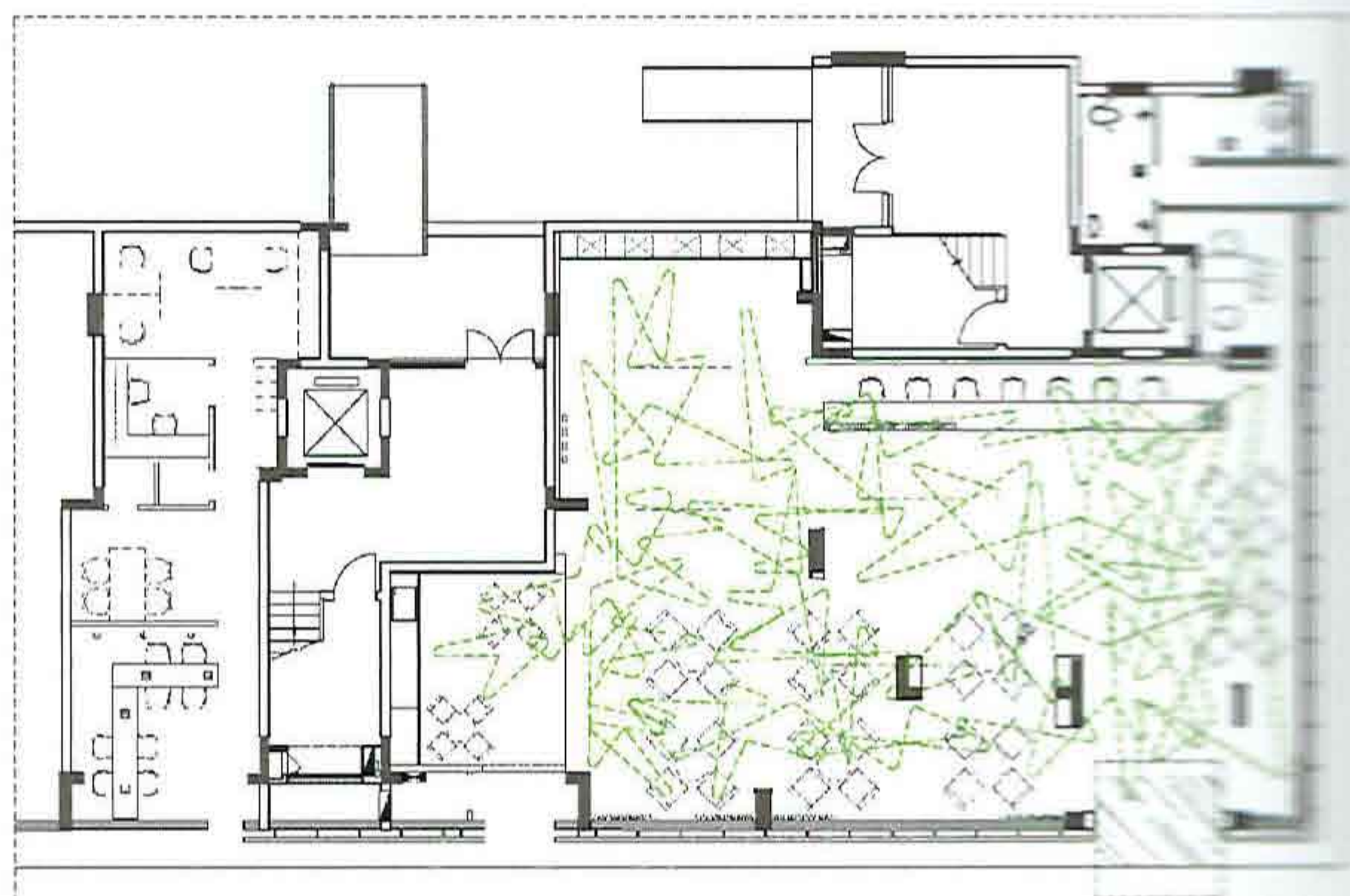
SALES CENTER OF JINDI GREEN TOWN, DONGGUAN

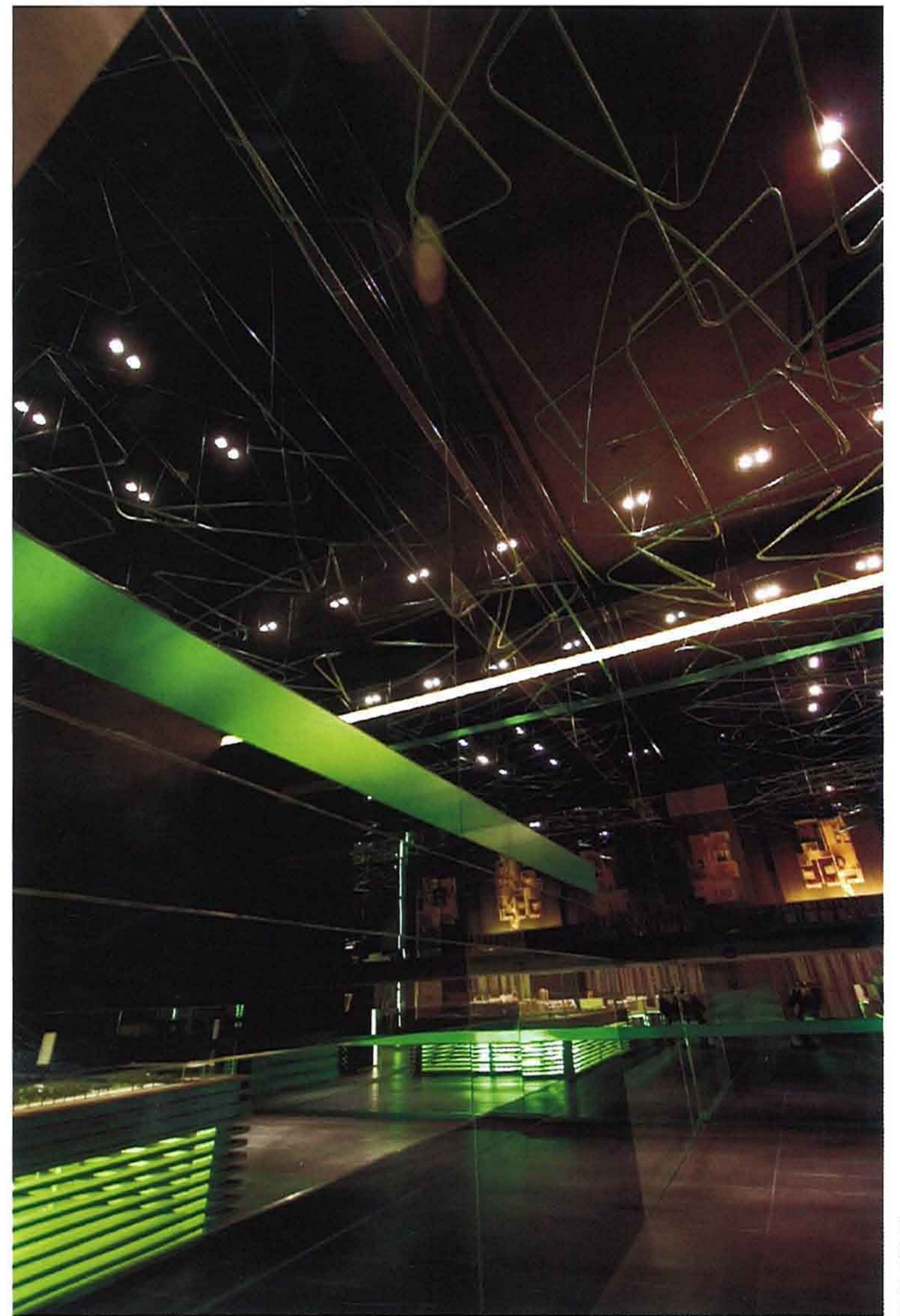
项目资料:

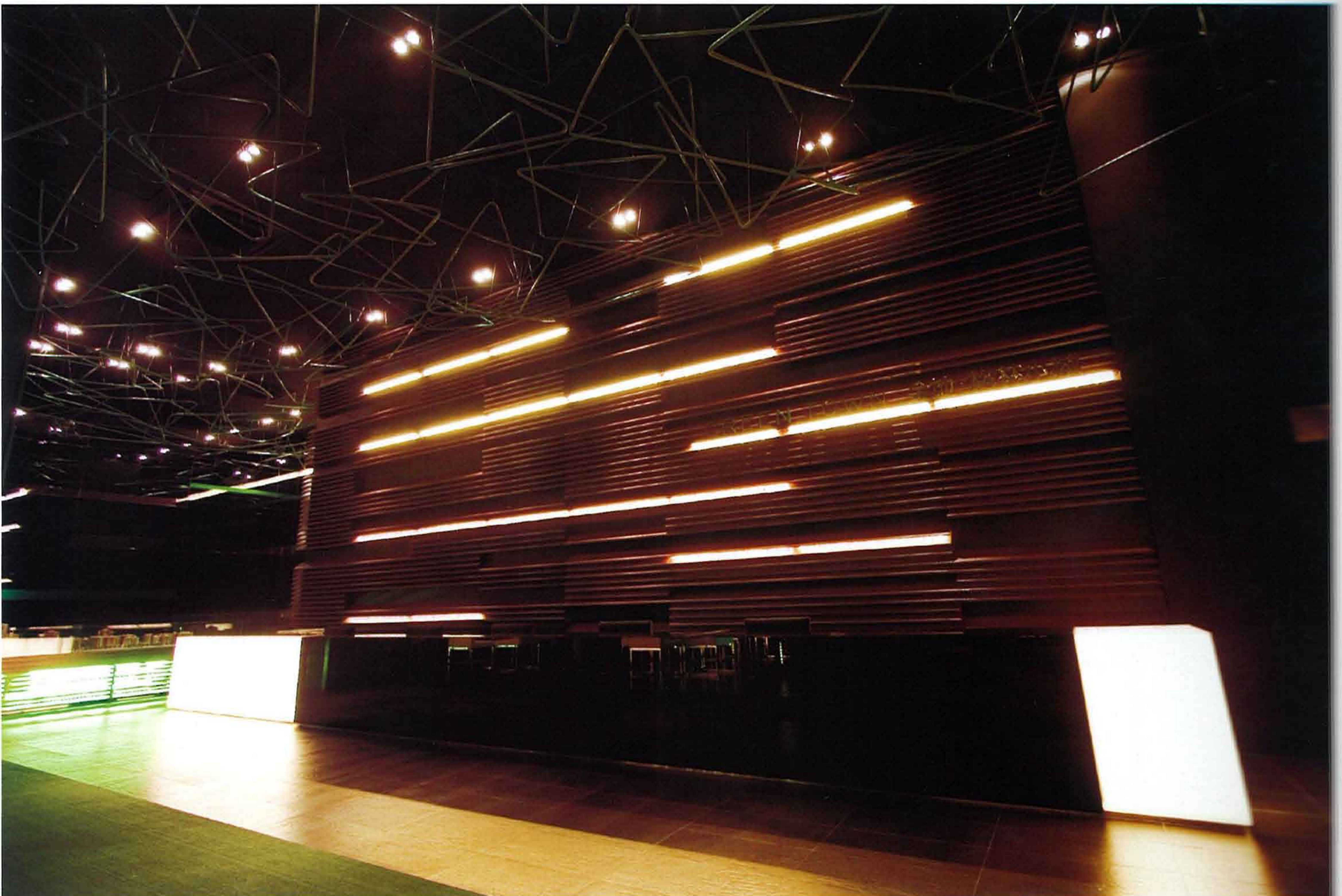
设计单位: 香港壹正企划有限公司
设计: 罗灵杰 龙慧祺
摄影: 龙慧祺
软装饰: Co-quadrant
位置: 广东东莞
面积: 150 平方米
主要建材: 黑地砖、柚木、灰镜、中密度纤维板

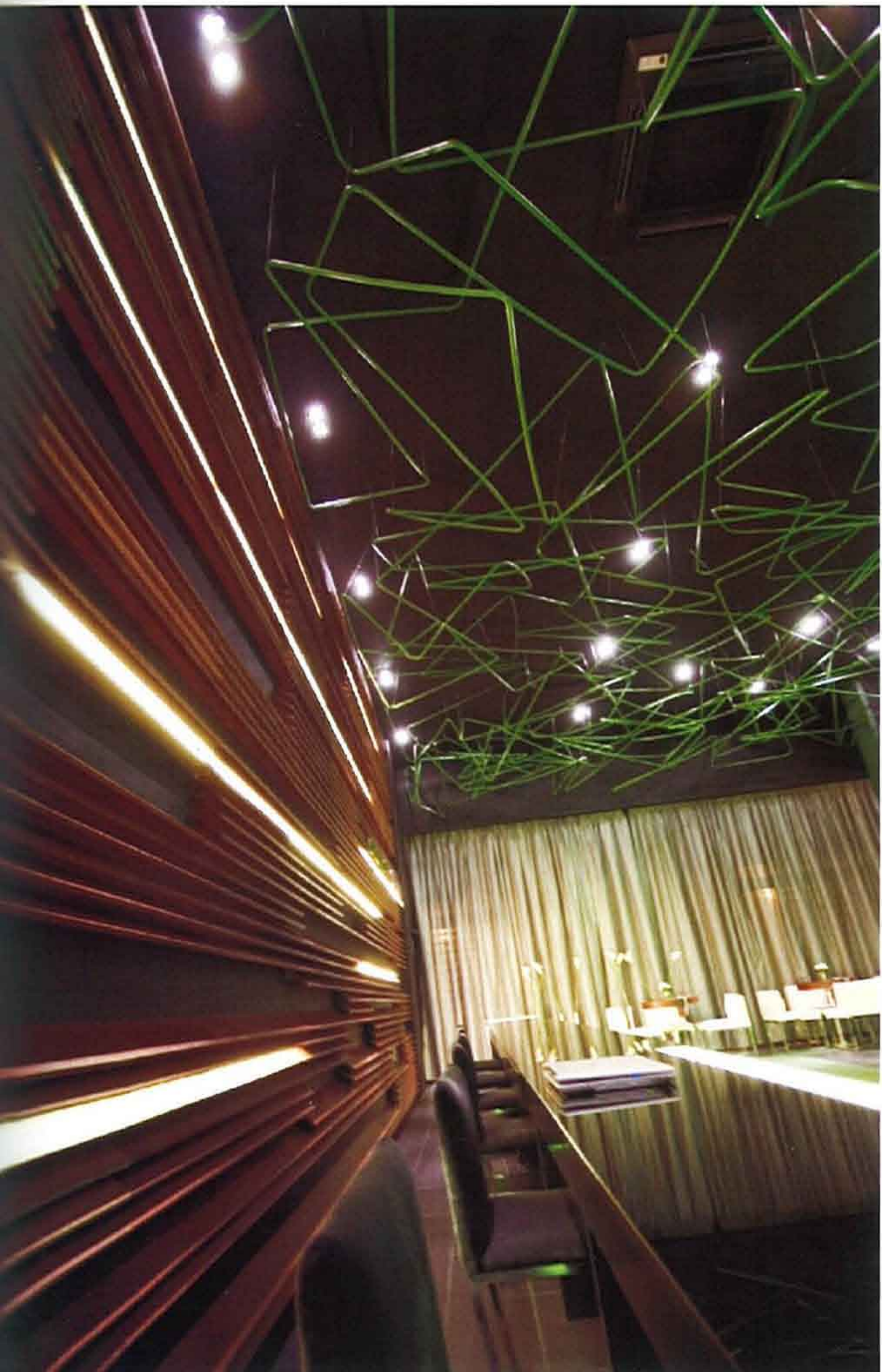
Project Information:

Design Unit: Hong Kong One Plus Partnership Limited
Designer: Luo Lingjie Long Huiqi
Photographer: Long Huiqi
Soft Decoration: Co-quadrant
Location: Dongguan, Guangdong
Area: 150 m²
Materials: Black Bricks, Teak, Ash Mirror, MDF









项目说明:

格林小城坐落在东莞市的中心，但发展商有远见地希望制造一个使居民身心舒适的绿色小城。设计师希望设计出一个幽静的环境，使买家都可以舒适地欣赏/讨论这个楼盘的各种设施。销售处是几个店铺合在一起而构成的，面积不大而且有很多柱子。设计师把柱子和天花的大型吊饰转化成会发光的森林，让人好像走入了梦境。

Project Description:

It was located in the central downtown of Dongguan, as a result, we aimed to build up a comfortable residential community with excellent greening system, providing a peaceful and quiet living environment for the residents. The sales center made by several posts was treated by us to form up a forest-like space with beautiful visual effect and full range of functional attribute.

