



GROOVY HOMES

SEXY AND DELICIOUS LIVING SPACES

KELLEY CHENG

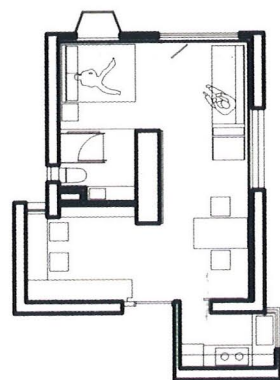
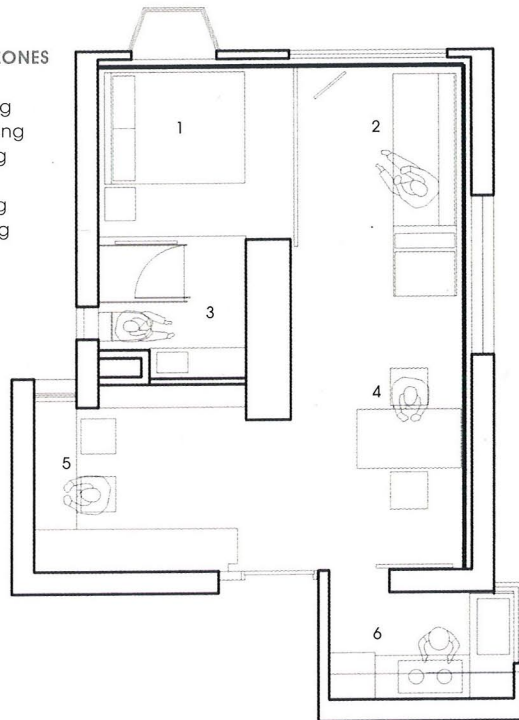
RED RAW

FROM TASK MASTER TO DISCO DIVA

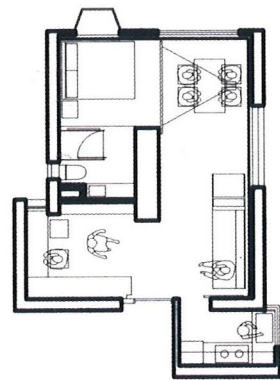
TEXT ANNA KOOR
 PHOTOGRAPHY LAW LING KIT
 DESIGNER ONE PLUS PARTNERSHIP LTD
 DESIGN TEAM LAW LING KIT & VIRGINIA LUNG
 OWNER LAW LING KIT
 LOCATION HONG KONG

ACTIVITY ZONES

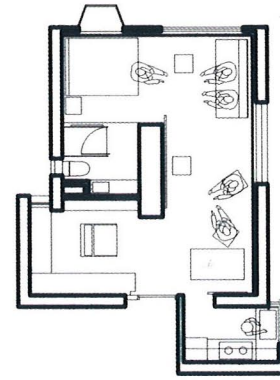
- 1 sleeping
- 2 gathering
- 3 bathing
- 4 eating
- 5 reading
- 6 cooking



SLEEPING



WORKING



PARTYING



Petite would be a polite way to describe Law Ling Kit's apartment in Fo Tan. The interior designer and his partner Virginia Lung of One Plus Partnership challenged themselves to find a way of making a tiny microcosm for everyday living and entertaining. The apartment is situated in an anonymous high-rise whose key asset is a stunning view of the Shatin racehorse track.

With years of professional expertise designing showflats and clubhouses in limited spaces, Law and Lung considered themselves ideal candidates to tackle their 430-square foot home. "To create an exciting space in a limited boundary is always challenging to most interior designers," exclaims Lung. One thing that helped the planning was that they could demolish most of the internal walls to leave a clean rectangular plan in what was originally a two-bedroom apartment. The duo started with a clear concept of breaking down and grouping their lifestyle into three states: working, partying, and relaxing. However, they wanted each "event" to utilise the whole apartment whilst conveying strikingly different moods.

The designers wanted to explore beyond the obvious strategies of sliding walls and mobile furniture. "Walls are an unchangeable factor, only the materials applied to them can make a difference," says Lung. They devised changeable wallpaper that accommodates the various scenarios Law anticipated. The wallpaper is custom-designed in the form of vertical slatted blinds similar to traditional office window blinds that hang in long strips and swivel in different directions. However, the designers revolutionised this product by applying different materials on both faces of the vertical panels. One side is mirrored and the other is a vibrant, gloss red.