

SPACE series 2

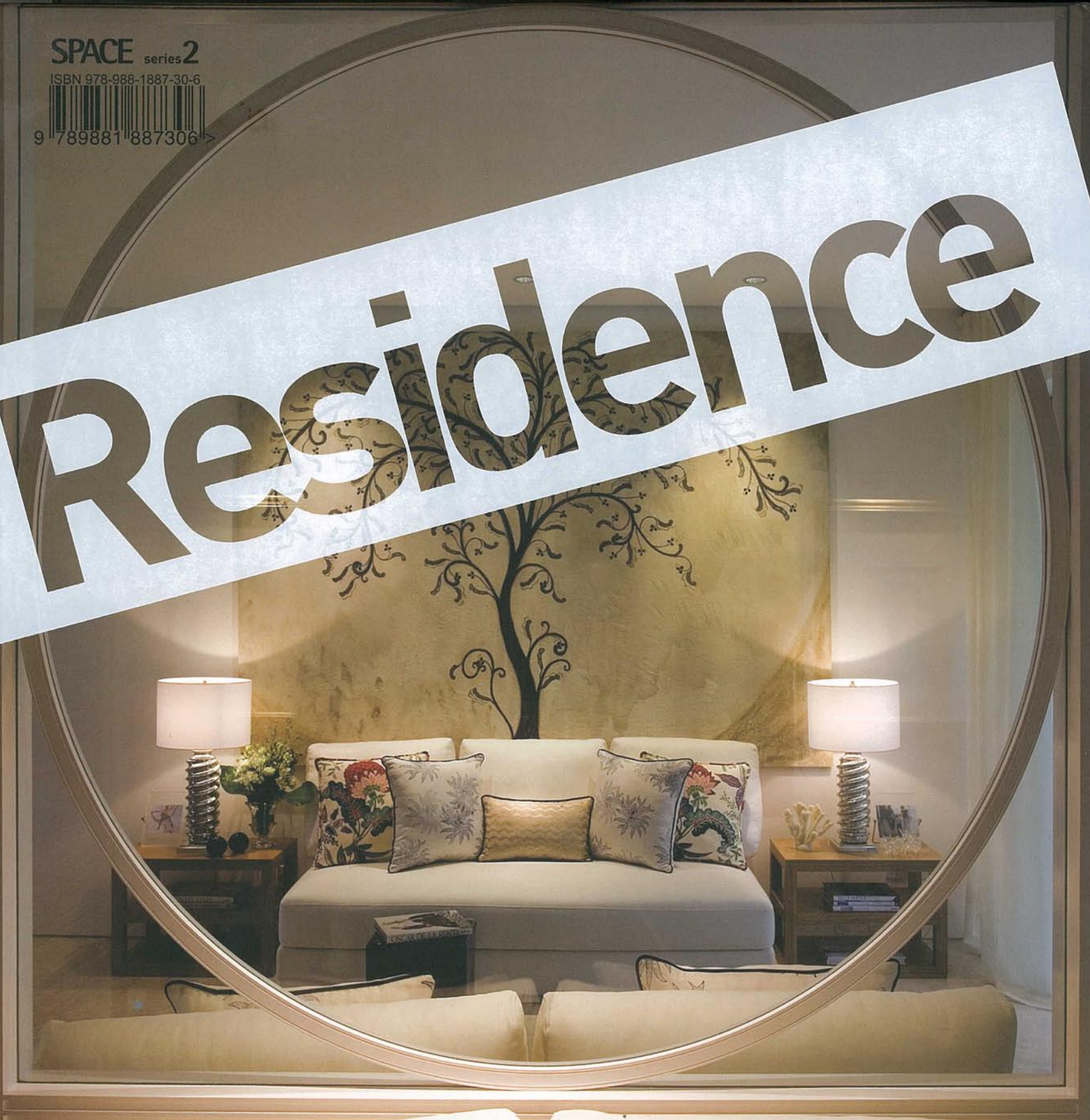
ISBN 978-988-1887-30-6



9 789881 887306 >

V80

# Residence



# shunde show home

FOSHAN, SHUNDE, CHINA 170 M<sup>2</sup>

The design theme of the overall space is modern with a **white color scheme** introducing contemporary style into the space. Black was used as a contrast hue to strengthen this arrangement. Fixture arrangement in this unit was inspired by origami, the art of folding paper.

Fixtures such as the sofa, dining table set, shelves and partitions were abstracted from the form of paper and given a bold and angular appearance. The fixtures extend from the floor to ceiling in order to reinforce its larger-than-life theme and define different spaces.







CLIENT/OWNER FOSHAN CITY SHUNDE XINDE ESTATE PROPERTY  
DESIGN FIRM ONE PLUS PARTNERSHIP LTD  
DESIGN TEAM LAW LING KIT, VIRGINIA LUNG  
PHOTOGRAPHY LAW LING KIT, VIRGINIA LUNG

# tian block 5 show home

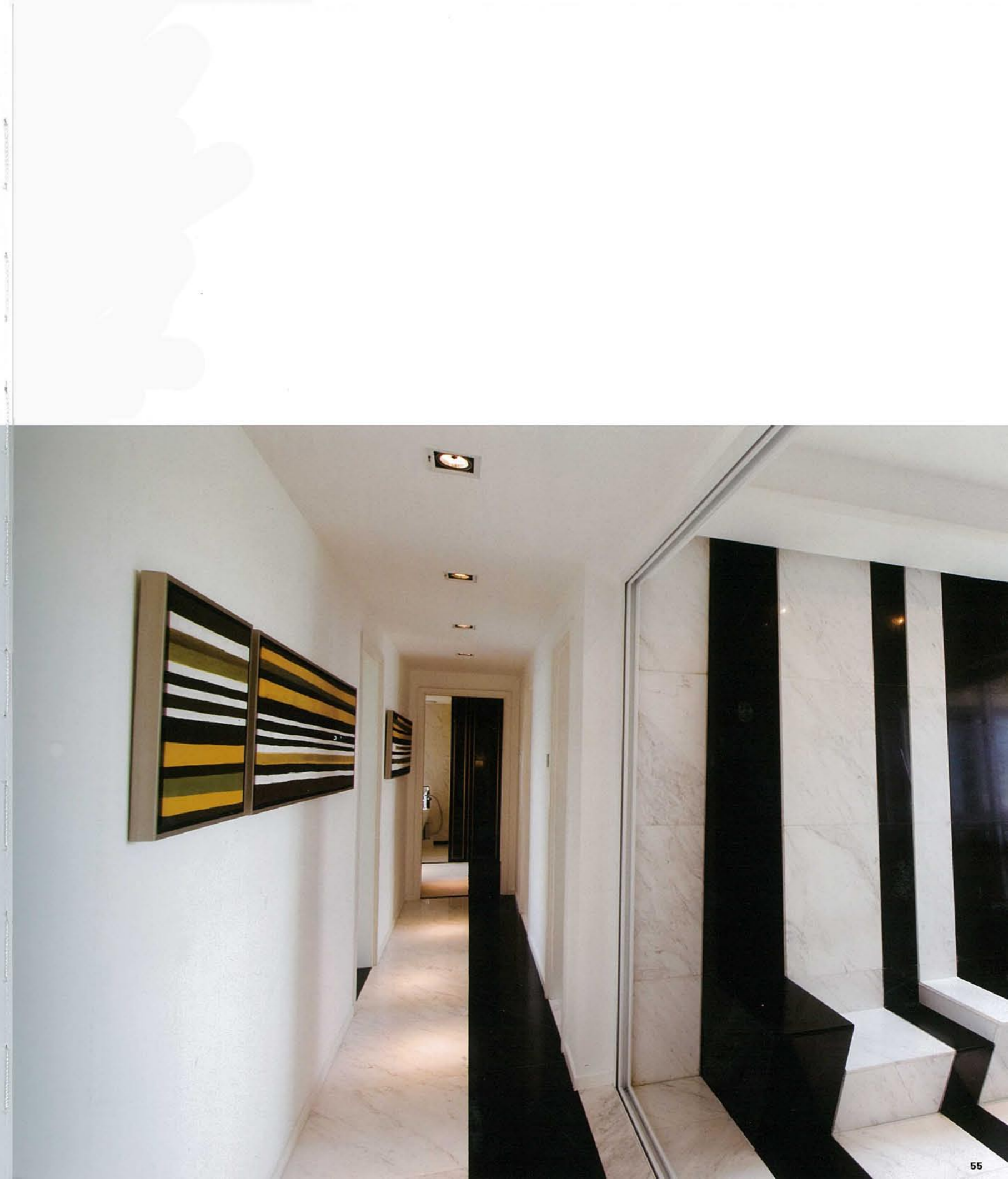
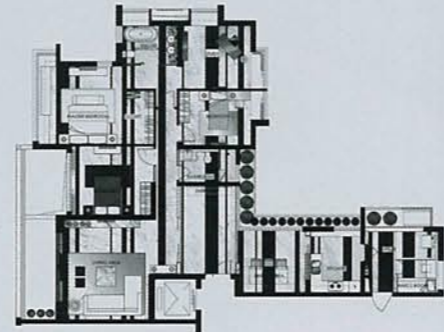
SHENZHEN, CHINA 200 M<sup>2</sup>

**In daily life, ordinary people have to learn a lot about their surroundings; right or wrong, good or bad, happiness or sadness, black or white. They may get all these from newspaper columns, the concrete wall or the cobalt road downstairs.**

As we live in a material world, our monochrome existence benefits from a touch of luxury and enjoyment. The presence and routine of life can be shown in this strong contrast between extravagance and flatness.

The modern design style of the show flat is fortified by bold monochrome strips all over the space. These strips are not only on the marble floor finish and carpet, but also extend vertically onto the wall and fixtures, such as the feature wall in the children's bedroom. This makes the spatial theme in the whole flat more unique. This characteristic is also evident in the dining room custom-made ceiling tube light. The similar continuous feature wall emphasizes this theme and acts a linkage between the front stage and the backstage.

A spicy twist was added to the choice of materials by adding a gold tone. For instance, the master bedroom contains the transformation from monochrome to a glamorous gold color scheme. Strips of black and white in the carpet, the sparkling golden mirror finish stainless steel decoration and the warm beige velvet finish - all these altered the space into a highway allowing varied design elements to flow around. Meanwhile, the master bedroom and study also benefit from the fascinating color contrast; more formal forms and shapes, and a clever light control system.







CLIENT/OWNER TIAN AN CHINA  
DESIGN FIRM ONE PLUS PARTNERSHIP LTD  
DESIGN TEAM AJAX LAW, VIRGINIA LUNG  
PHOTOGRAPHY AJAX LAW

# manhattan hill

HONG KONG, CHINA 260 M<sup>2</sup>

**The building complex is located in the west of Kowloon peninsula which has a close relationship with the development history of Hong Kong. To construct a new luxury residence in a place with extraordinary significance leads to a conflict between the product and the environment. Thus, a mix of modern and classic design styles was used to achieve this goal.**

In order to release anxiety from a busy urban life, greys and whites were used as the main colors in the interior. Meanwhile, materials with a silver color or mirror finish were selected to establish a modern style. The feature wall in the living room was built from materials having different characteristics. The wall features grey and white marbles in answer to the color scheme, accompanied by dissimilar mirror-finished stainless steel. These are assembled with contours and classic patterns etched on them in order to create a single pattern set. Installation like this requires a lot of time, working progress and cost, and the designers needed

to cooperate with several different material suppliers. This proved the designers' requirement and concerns about the project.

Furniture and fixture also played a crucial role in responding to the theme. For instance, the chandeliers in the living and dining room have simple and geometric forms, their crystal blocks and stainless steel finishes matching each other perfectly and spreading a luxurious feel all around. The large mirror with a stainless steel frame in the dining room demonstrates a complicated production method. Complex flower patterns were cut from stainless steel and then

installed on the top of the mirror surface. This layered treatment was also used for other fixtures. Other items of furniture combine a classic form and modern finishes, such as the black and white hair-on-cowhide sofa and the coffee table, banquet cabinet and entry cabinet finished in white frosted paint. The emphasis on quality is a sign of advance lifestyle. So the quality of furniture and materials was crucial to the place. The hair-on-cowhide sofa and rug are custom-made goods bought from Italy, as well as many of other decorations like curtains, sheer laminated glass, marble laminated glass and lightings which are also custom-made

by foreign manufacturers. The project is oriented on style and quality rather than cost.

The same principle of merging was also applied in the bedroom and master bedroom. Grey and black were added separately into the color scheme. Similarly, the dark tone of the wenge timber flooring in the whole unit was adjusted to match the bright and robust space. Here is another example of the collaboration with the main design - many little square mirrors are well formatted with fabric finishing on the feature wall of the master bedroom thereby encouraging an alliance of the soft and hard, light and dark, and the

vigorous and mild. Other furniture in the room such as the mirror stainless steel cabinet, and the bed with an extravagant form and finishes, also work under the same design basis. There are plenty of stainless steel cut-out classic patterns on mirrors and wardrobes to enhance the magnificent atmosphere.

The designers cleverly utilised the conflict and mix of form and material to express the remarkable relationship between classic and modern styles in order to produce a deluxe environment.

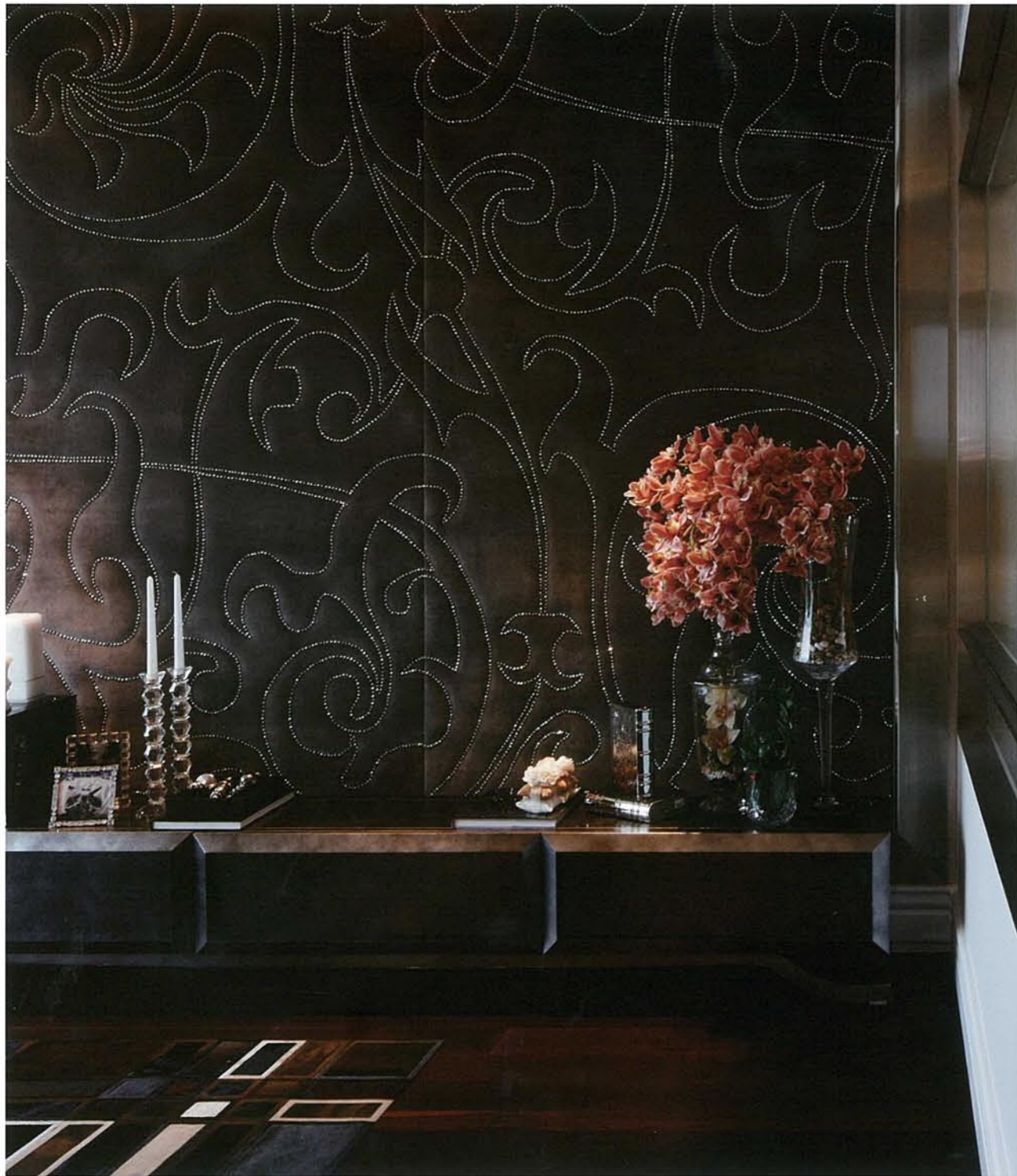












CLIENT/OWNER SUN HUNG KAI REAL ESTATE AGENCY LTD  
DESIGN FIRM ONE PLUS PARTNERSHIP LTD  
DESIGN TEAM LAW LING KIT, VIRGINIA LUNG  
PHOTOGRAPHY ULSO TSANG