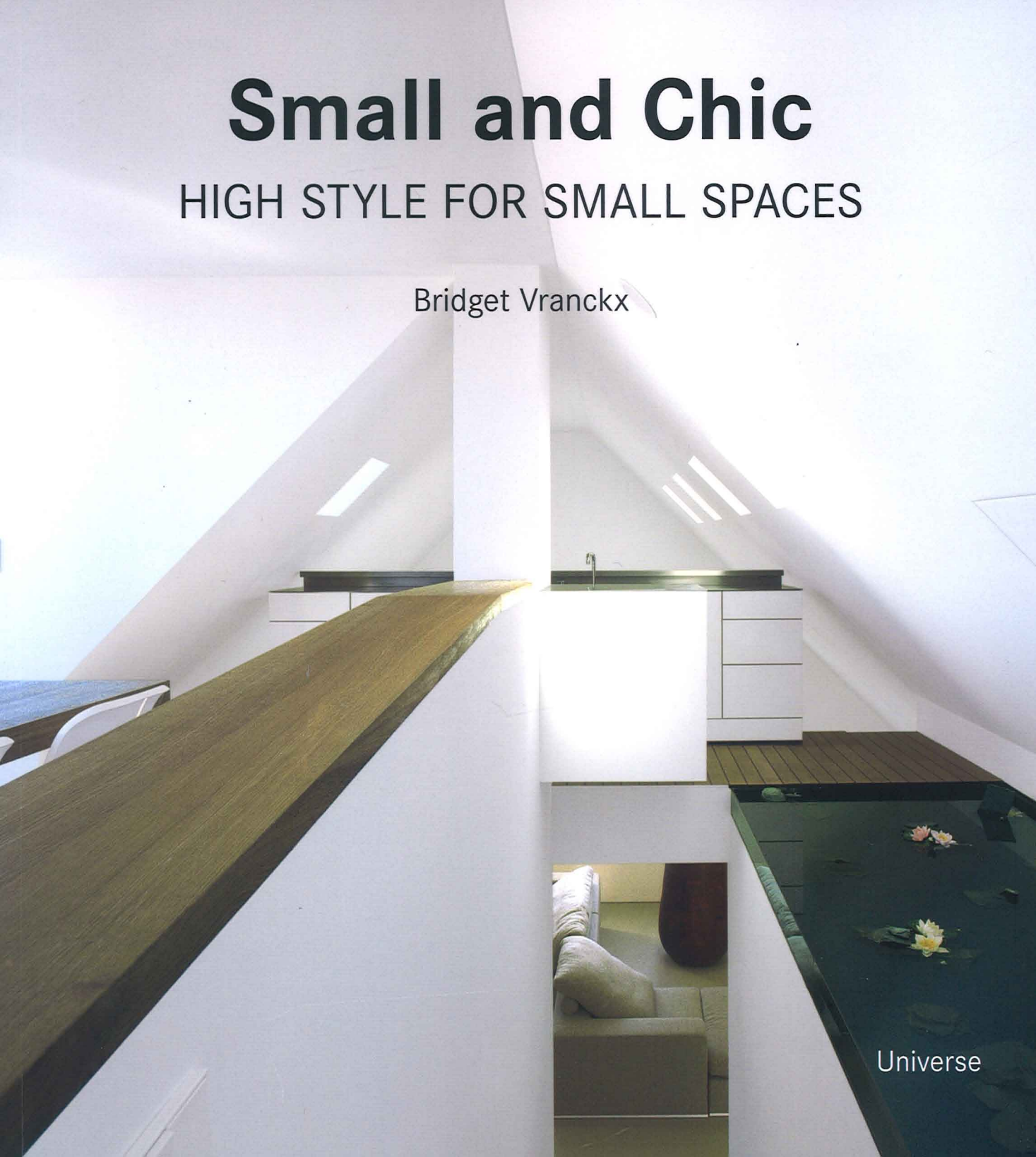


# Small and Chic

HIGH STYLE FOR SMALL SPACES

Bridget Vranckx



Universe

## Small Feat

Architect: Ajax Law Ling Kit, Virginia Lung

Even though interior designers in Hong Kong are used to working with small spaces, this apartment was the most challenging project yet for these designers. The brief called for the three basic functions—working, entertaining, and relaxing—to be accommodated in a 650-square-foot space and for the mood of the apartment to be changeable to suit the event.

With their changeable wallpaper, the designers of this small apartment created an interactive space with exciting dimensions of imaginary spaces. Interconnected modules, movable furniture, and blurred boundaries provide a dynamic spatial relationship. The use of vertical blinds and sliding doors allows for different multiple interior atmospheres to be created according to the needs of the event. One side of the blind has a mirror finish and, the other, a glossy red paint finish. Reflective materials not only double the volume of a space, but fragments of mirrors also create illusions of what is real and unreal. Add to this the flashing disco light and the stimulating red color to create the perfect party ambience. The positive and active aspect of the color red is also perfect for the work environment. For day-to-day use, the blinds can be opened to expose the gray walls and create a calm and soothing atmosphere. In short, this Hong Kong residence is a highly flexible small space which maximizes both space and mood.



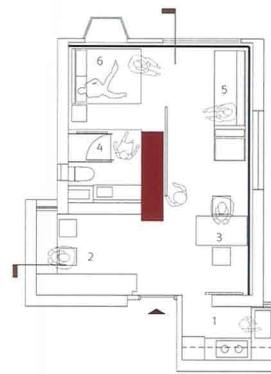
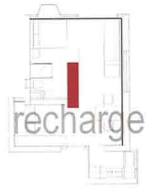
Surface: 646 sq ft

Location: Hong Kong, China

Completion date: december 2004

Photos: © Ajax Law Ling Kit, Virginia Lung





- 1 Kitchen
- 2 Study
- 3 Reading area
- 4 Bathroom
- 5 Living room
- 6 Bedroom

Floor plan



To create a place of freedom without boundaries, the blinds can be turned to reveal fragments of mirrors and generate illusions of what is real and unreal





Sliding doors are the absolute space dividers in small spaces. Here the bedroom can be separated from the rest of the space or integrated, and the mood changes accordingly at a flick of the blinds.



## Executive Repose

Architect: Ajax Law Ling Kit, Virginia Lung

The Gateway is a business apartment development in Shenzhen which caters to businessmen's increasing demand for comfortable temporary residences. Conveniently located between Hong Kong and Shenzhen to suit the needs of Hong Kong residents who frequently commute to Shenzhen for work purposes, The Gateway offers a variety of apartments ranging in size from 387 to 775 square feet. These units offer a creative and comfortable alternative to the dull standardized hotel room. Each has its unique characteristics and reflects the profiles and needs of the businessman who occupy them.

The Entrepreneur is the largest suite created by this Hong Kong company hoping to steer the design of apartment hotels in a new direction. To reflect the characteristic high-class lifestyle of entrepreneurs, the designers chose hues of gold and dark and light brown colors. The use of these colors synonymous with luxury is combined with materials akin to opulence such as the dark marble used in the kitchen and bathroom. To create the feeling of space, reflective materials such as mirrors are widely used. Thus, the deluxe bedroom and en suite bathroom are enlarged by inserting mirrors, while yellow glass adds a glamorous touch.



Surface: 775 sq ft

Location: Shenzhen, China

Completion date: 2006

Photos: © Gabriel Leung





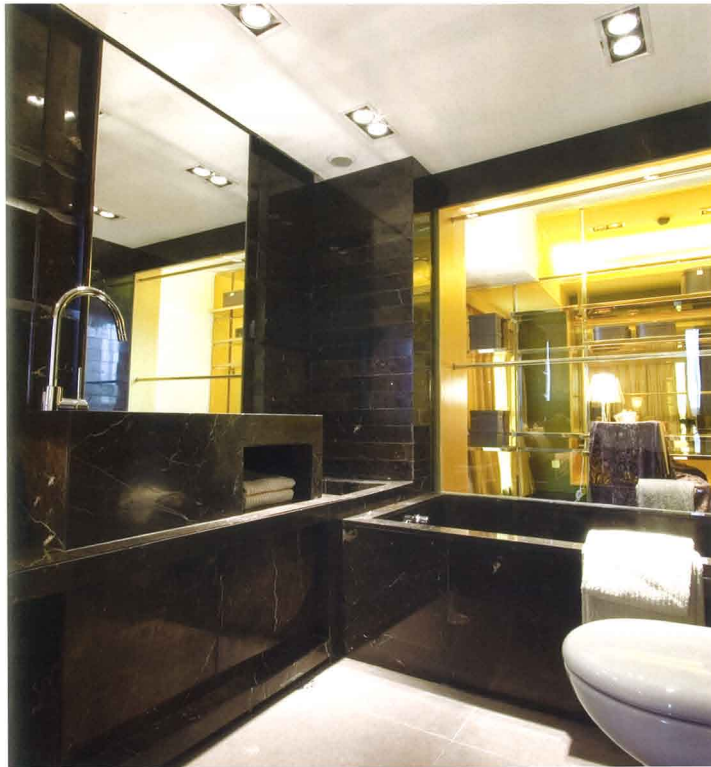
Floor plan

1. Kichen
2. Dining room
3. Living room
4. Master bedroom
5. Balcony
6. Master bathroom
7. Study
8. Bathroom
9. Guest room





To create an apartment characteristic of an entrepreneur's lifestyle, the designers chose luxurious colors and materials, such as shades of gold and brown and marble and velvet.



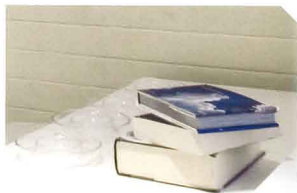
Mirrors are used in the master bedroom and bathroom to enhance the space and extend its elegance.

## Futuristic Flair

Architect: Ajax Law Ling Kit, Virginia Lung

The basic idea behind this relatively small apartment in the capital of the Sichuan province is "wrapping." The apartment is defined by streamlined curves which integrate various domestic areas. A dark curved structure at the end of the main living space forms the sofa on one end and dining table on the other, while a similar white wrapping element forms the bed and wardrobe in the child's room. These structures hide the split-type air conditioner in the ceiling.

White is the primary color used throughout the apartment—white marble flooring, white walls, white beds, and white wardrobes—and is complemented by dark blue details. A large mirror in the living and dining room creates a double effect, making the place look bigger. It also reinforces the futuristic feel already created in this area by the curved structure. Mirrors are also used to the same effect in the master bedroom, which is defined by a round white futuristic-looking bed. A fluffy carpet adds some color to this minimal boudoir. The combination of a limited color scheme and rounded edges makes for a simple yet cozy urban family home.



Surface: 915 sq ft

Location: Chengdu, China

Completion date: 2007

Photos: © Gabriel Leung





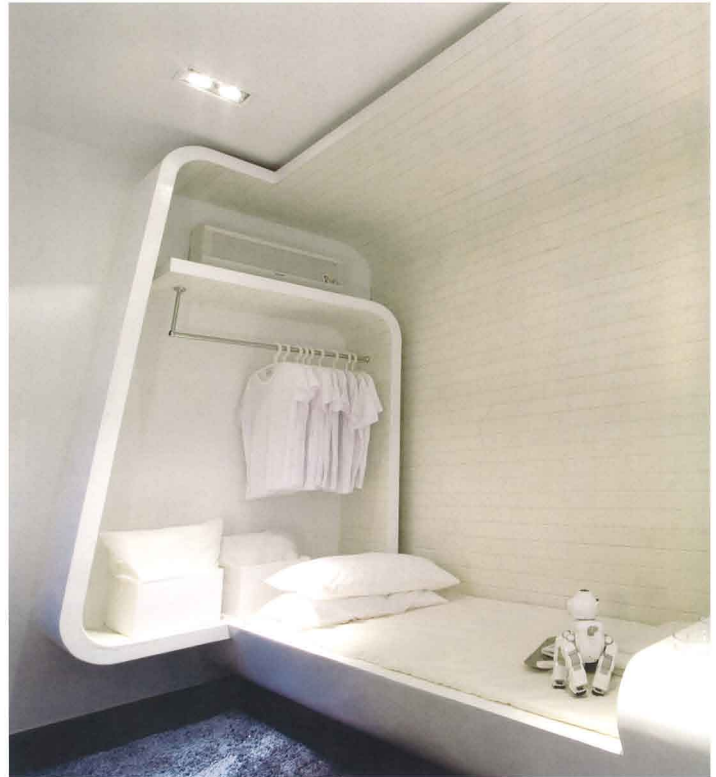
Floor plan

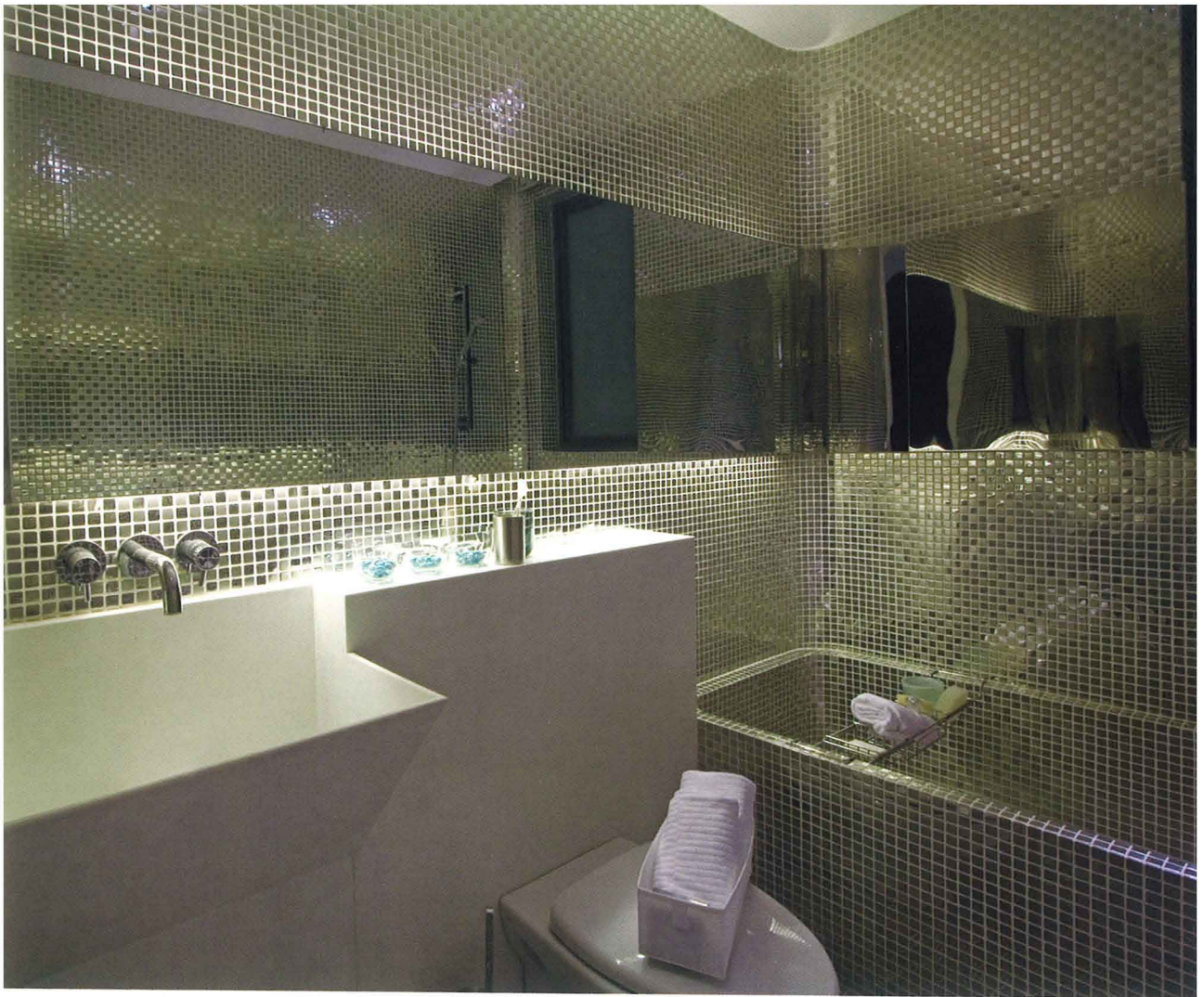
1. Dining room
2. Living room
3. Kitchen
4. Balcony
5. Master bedroom
6. Children's room
7. Bathroom



Floor plan

1. Dining room
2. Living room
3. Kitchen
4. Balcony
5. Master bedroom
6. Children's room
7. Bathroom





A tiled bathroom is the ultimate in luxury bathing.