

頂尖
樣板房
設計

T O P
S H O W
F L A T
D E S I G N

TOP



材質: 鐵刀木地板、烤漆、啡金花、雲石、牆紙、馬賽克

整體空間以古典作為設計的主導, 以黑色及啡色營造出古典的溫暖效果, 並以相對的白色作為協調。全屋的所有裝飾飾面大致上以白色及黑色帶出強烈的對比, 並以不同深淺度的啡色作為緩和黑白色的刺激。整個的布局以簡單為主, 利用物料及家具豐富全屋的古典味道。

在空間設計方面, 飯廳與客廳之間利用本身的建築結構, 以臺階作出空間上的層次, 但仍以天花及牆身把飯廳與客廳連接成一個空間, 連貫牆身利用了黑色及透明的人造閃石砌出古典的圖案, 帶出高貴的古典味道。客廳的家具以白色為主, 除加強了客廳應有的高貴感之外, 亦區分了以啡色家具為主的飯廳。飯廳牆身裝上古典的掛牆大鏡, 加強了飯廳的空間感。飯廳與廚房之間以蝕花圖案趟門作出分隔, 實用之餘更加强空間的古典效果。

另外, 打通了主人房與書房, 增加了主人房的空間之餘, 亦營造了一個私人空間。主人房的牆身選用了比較誇張的圖案, 古典之餘亦增強了視覺上的新鮮感。主人房與主人房浴室之間用了蝕沙圖案玻璃作為分隔, 既可以減少以實牆作為分隔的乏味, 亦可以營造出一個浴室應有的私密空間。

父母房及睡房亦運用了類似的設計方式, 以不同深淺度的啡色用以緩和牆身的黑白色對比。父母房牆身用了帶有質感的掛鏢, 配合整體的空間, 增強了古典的溫暖感覺。

全屋的地臺主要用了不同質料的木地板, 區別出室外及室內的空間。室內的木地板用了斜鋪的方法, 既可以襯托出全屋以直線及橫綫為主的設計, 亦豐富了空間的資料, 并于客廳、主人房及父母房中用了不同物料的長毛地毯, 增加了古典的溫暖感覺。

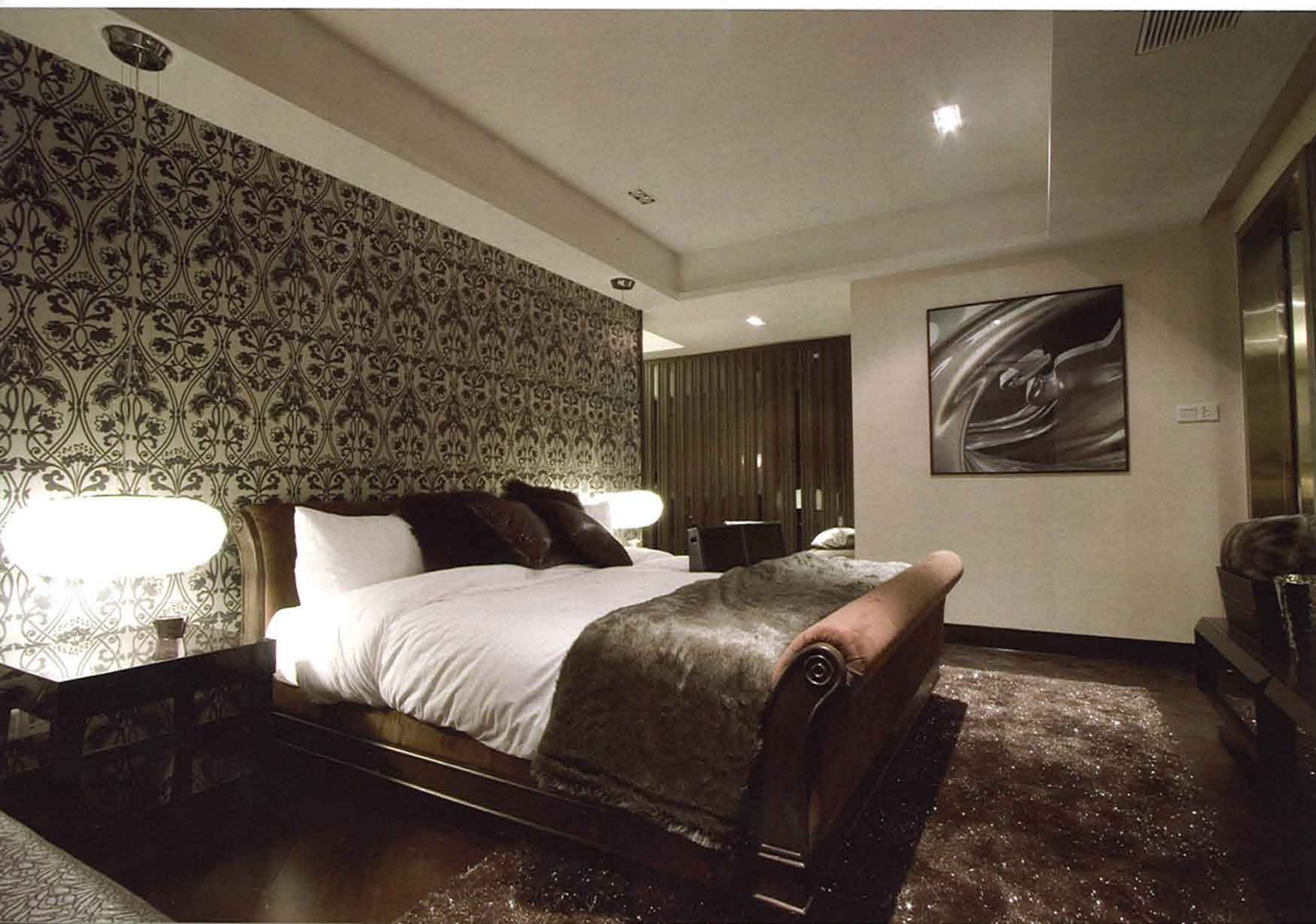


Construction Material: timber floor, baking paint, dolomite, wallpaper, mosaic

This case is mainly of classic style. Designers used black and brown to bring out a kind of classical warm hue, while using white as opponent to obtain a balance. By sharp contrast of black and white, simply layout and giving prominence to texture of material and furniture, the whole interior is giving out a classic aura.

Based on the original architectural structure, designers divided spaces by different step levels and used walls and ceiling to embrace the dining room and living room as one, the connecting wall is filled in artificial black crystal amphiboles. Furniture in living room is mainly white, which separates from the dining room's brown. The separation between dining room and kitchen is a wall with hollow flower pattern. In addition, master's room and study are combined into one to build up a large, private space.

Different kinds of timber floor divide outside from inside space. The floor timbers inside are diagonally placed in order to match with the linear design language of the whole. Carpets of different textures respectively placing in living room, master's bedroom and elderly's bedroom add more warmth to the house.





材質: 銀箔、橡木地板、不銹鋼、牆紙

此樣板房坐落於北京市中心附近的四惠區，為市內急速發展的區分之一。因此特將設計風格定為傳統及現代風并重的摩登中式風格。單位為兩層式，空間整體形狀為簡單的長方形狀，所以設計可以在簡單及沒有巨額預算下發揮出來。

因應摩登中式的設計風格，房間在顏色設定上選取了富時代感的銀色作主色，加上白色及灰色的配合加強主色的效果。單位內很多地方均運用了銀色來強化主題，例如飯廳牆身的閃銀色壁紙及屋內的銀色油漆家具，使用顏色闡明了現代北京發展迅速的步伐。然而，中式風格中的傳統要素需與時代感元素取得平衡以使風格得以完整，單位內有不少設計正是配合了這種融合。最為矚目的是客廳牆身的不銹鋼蝕花皇帝掛畫，畫的大小及圖案表現出老北京城的氣派之餘，更藉鋼材的背後意義來表達現代北京的方向。但是若然欠缺兩層全高的客廳配合，以上的效果將會大打折扣。此客廳的設計正是運用了房間高度的特點，容立大型掛牆裝飾及長水晶燈，使下層及上層主人房也能分享裝飾帶來的豪華氣氛。

屋內家具也為營造中式摩登風格成功消除了兩者矛盾。飯廳餐桌及餐椅便利用外形及物料的結合來回應主題，就像餐椅的中式方椅造型結合銀箔油漆表面，再加上餐桌的白色雲石面，使飯廳風格一點即明。這種組合亦有應用於上層兩間睡房當中，設計師更增加融合的應用範圍，于主人睡房牆身採用古典摩登風格的黑銀色壁紙，令主題風格的定義更為寬廣，而又不偏離主題。此外，為使屋內各房間更為連貫，客、飯廳及各睡房均採用統一系列花樣的活動地毯，表明屋內各空間風格的相容性。

另一方面，這次設計也有考慮到環境的舒適性。其中一例是客廳利用全高窗戶使自然光遍及上下層多個位置，而屋中多處凡鏡面裝飾也對光源流通有莫大幫助。兩個浴室亦多用了白色建材作其主色調，如淺木色櫃檯及米白色瓷磚，用者即可從屋內急促的時代感氣氛中略為得到舒緩。從以上各點看來，表達了設計師的美學觀感，也表達了他們對設計的宏觀考量。



This sample house is located in SiHui District around the core of Beijing. The style of interior design oriented to modern china chic. The architectural structure is rectangle shape and double-interlayer.

Designers selected the futuristic silver as the main color, adding white and grey to enhance the modern effect. Taking advantages of the tallness of interior space, designers decorated the living room with large scale wall decor and crystal light, by which both floor can share its luxurious glamour. High windows bring in natural light and many mirror surfaces help reflecting light. All the furniture apt to the theme while innovatively usages of different material enrich the style. For example, using dark silver wallpaper on the wall of master's bedroom to make it classical but modern; using a series of carpets of same patterns in different bedrooms to make it harmonize. The two bathrooms use white material mainly.



材質: 清鏡、烤漆、黃色玻璃

其主題背景是資本家，顧名思義這是富有人家所擁有，為了顯示其身份，設計師選用可大量金色物料做背景，客廳更造了一副齒板的牆身，再配上間斷金色，深及淺咖色，新穎之餘，亦巧妙地保留了齒板高貴的特質，創意非常。

廚房用了深咖色木及雲石做櫥櫃，結合條子的設計，給人簡潔又優雅的感覺。

為了令主人房變的寬敞，設計師特意打通了睡房及浴室，再加上大量的反光物料，如清鏡和烤漆牆身，以及黃色玻璃，令氣氛變得更豪華，高貴。

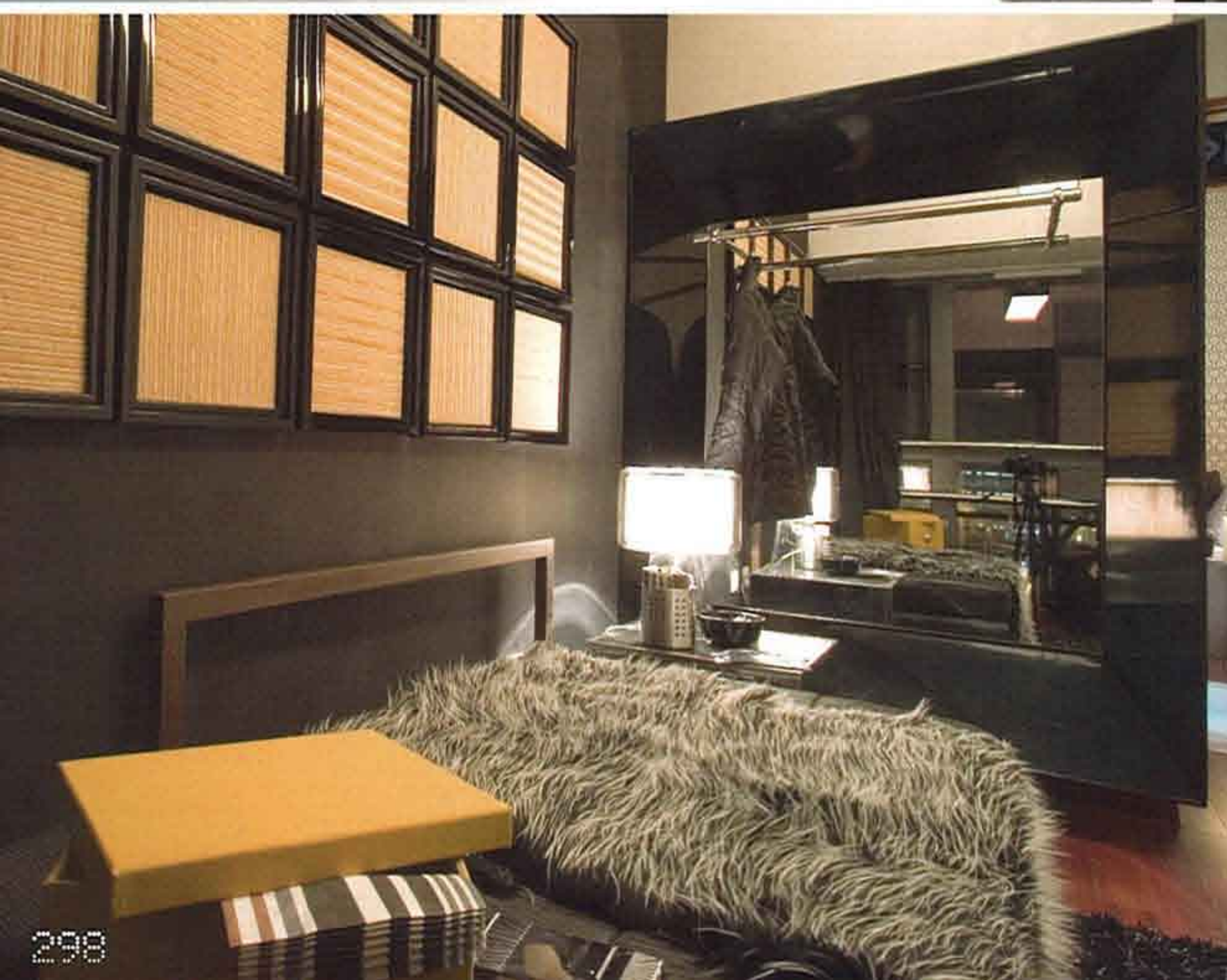


The capitalist's home is just what the name implies: the representation of wealth and status. Designers used a lot of golden elements including a wall which makes up of different color plates of golden tone. The design maintains the luxury feature of the golden background while is novel and creative enough.

The kitchen cabinets are made of dark brown timbers and marbles, in stripe structure, bringing out a feeling of simple and elegant.

In order to make it opener, designers intently connected the master's bedroom and the bathroom together, then used polish material such as mirror, baking paint and yellow glass to enhance the luxury and elegant aura.





材質：鏡鋼、烤漆、牆紙

整個房子以黑白色為主色。客廳主牆身貼上菱形格子牆紙，黑白條紋的搭配造出陰影效果，跟攝影師這職業相稱非常。但焦點所在，相信非客廳的兩盞天花燈莫屬。全黃色的內燈罩為近全黑白色的客廳帶來兩顆點綴；燈罩內環排滿了一群建築物，形格之餘亦突顯了品位。

主人房間同以黑白為主，衣櫃設計新穎，以鏡和不同寬度的黑色木條作為其外形，令衣櫃變得輕盈的同時，亦令身處于有限空間的它增添了一份通透感。

不過，論衣櫃的獨特客房內的那個亦不一多讓設計師簡單的運用了三件元素——斜框、鏡及掛衣通，去組成整個衣櫃，再一次聰慧地取代了傳統笨重的衣櫃設計；尤其以鏡做了衣櫃的背板，為狹小的客房空間增強了一份空間感。兒童房一黃米色代替了外間的黑白色，給房間內添了一份生氣，加上配以一幅黃色點子的牆身成了整間靜默的房子最活潑的一角。而房內的衣櫃以格子鏡作門身，令兒童房的空間看似加倍了。



Construction Material: Polish steel, baking paint, wallpaper

The whole space takes black and white as main colors. The black and white wallpaper of lattice and stripe pattern gives out a feeling of shadow. Two totally yellow droplights with lampshades of buildings pattern are placed in the dining room, highlighting the black and white surroundings and enhancing the glamour.

Also the master's bedroom is mainly black and white. The design of the wardrobe is innovatively made up of black battens and mirrors, which looks light and transparent.

Using mirrors as backboard, the elaborately designed wardrobe enlarges the guest room that is originally not large enough.

Yellow replaces black and white in children's room. Yellow dots wallpaper activates the whole quiet space. Also the plates of mirror covering the wardrobe make the room look larger.

